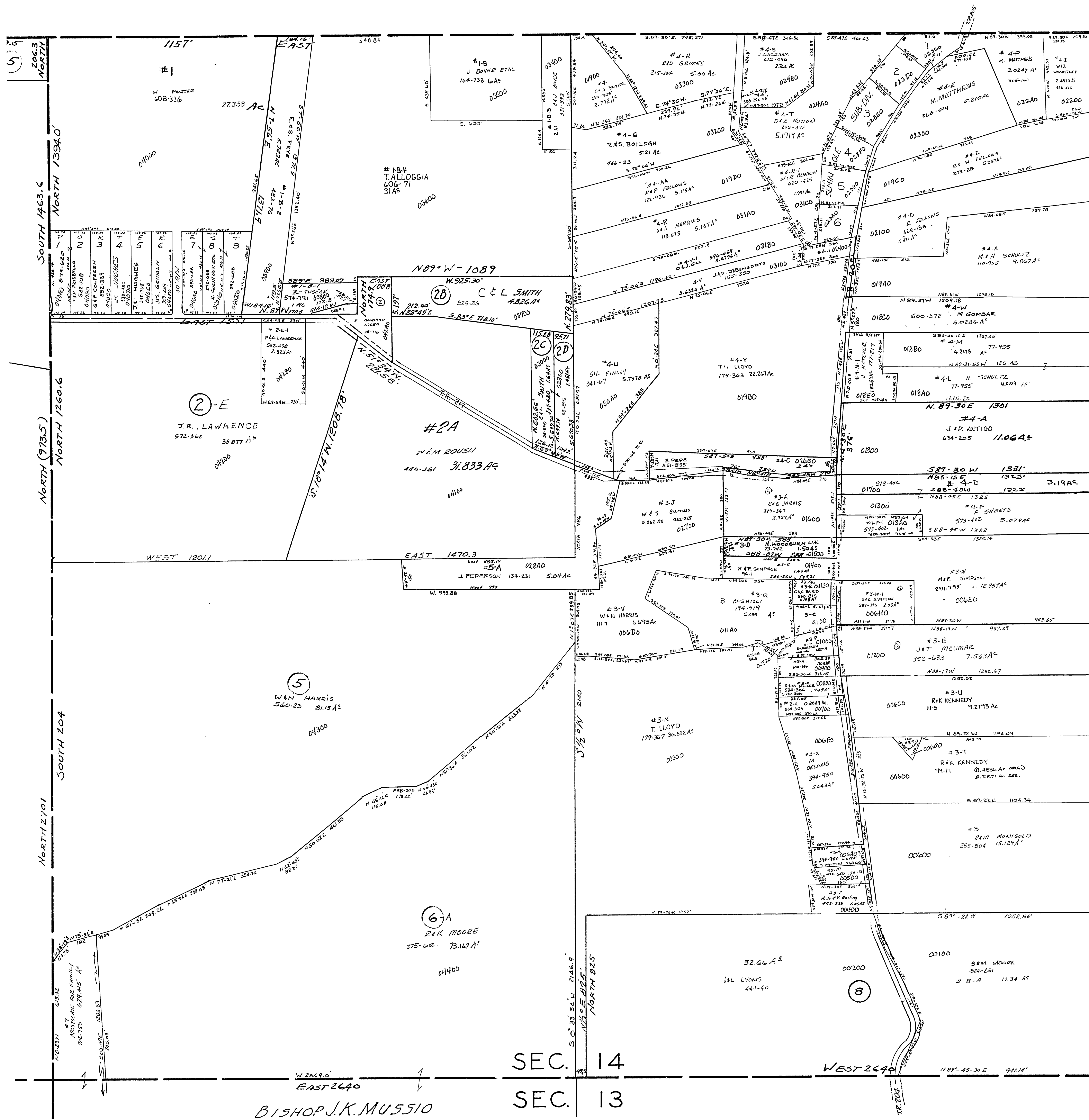


24-1400-



SEMINOLE SUB-DIV.

1	J.M. MOUMAK	547-180	251X198.47
2	L.G. CHRISTIAN	561-144	223X207.51
3	T.A. PERLIN	11-388	
4			
5	J.D. SWANKEN	62-942	171X223.25
6	R.S. HIBBITS	7-805	171.62X223.65

#3-D-1	T. LLOYD	179-369	0.153 A
#3-C	G.C. BIRD	609-38	0.695 A
#4-J	R.S. HIBBITS	40-809	0.636 A

SALEM TOWNSHIP  
SECTION 14, TWP. 10, RANGE 3.  
SCALE 1" = 200'  
1958

14